

# Artecy

## CROSS STITCH

### Fire Lily Photo



\* Original image© Swallowtail Garden - Flickr  
Cross Stitch Design by Tereena Clarke.

Completed Size = 220w x 200h Stitches

14 Count, 16w x 14.5h inches (41cm x 37cm)

16 Count, 14w x 12.5h inches (36cm x 32cm)

18 Count, 12.5w x 11.5h inches (32cm x 29cm)

Uses 26 DMC cotton colours. Only full cross stitches are used in this pattern.

To be stitched on black fabric or you could stitch on a light fabric and stitch the black background stitches.

# *Pattern Instructions*

\* This pattern can be worked on any fabric type, colour or count you prefer. To work out the size of the finished article, take the number of stitches wide and high and divide it by the count of your fabric (e.g. 14,16,18 count aida etc) to get the size in inches. Times it by 2.54 to get centimetres. We have the sizes in inches shown on the previous page. Also leave at least a few inches of fabric around each side of the design to assist in framing. The higher the fabric count the smaller the completed project will be.

\* To put the pattern together look in the top and bottom corners. The page numbers in brackets show which page number it joins up to. Page 1 always starts at the top left hand side of the pattern. Our pages also have a shaded grey section. This indicates a 3 row overlap from adjoining pages to assist with reading the pattern. PLEASE DO NOT RESTITCH THIS AREA.

\* You should begin at the centre of the pattern. To find the centre of the pattern it is just a matter of laying the pattern out and locating the arrows at the top and left hand side of the patterns, they are determined by dividing the stitch numbers wide and high in half. Where the two points meet in the middle, that is the centre.

\* If you need more assistance to find the middle of your pattern or the page layout, please see the notes section on the colour symbol chart. The easiest way to stitch this pattern, as it has multiple pages, is to stitch one page at a time.

\* We suggest using two strands of floss for each stitch and one strand for backstitching if the pattern calls for it.

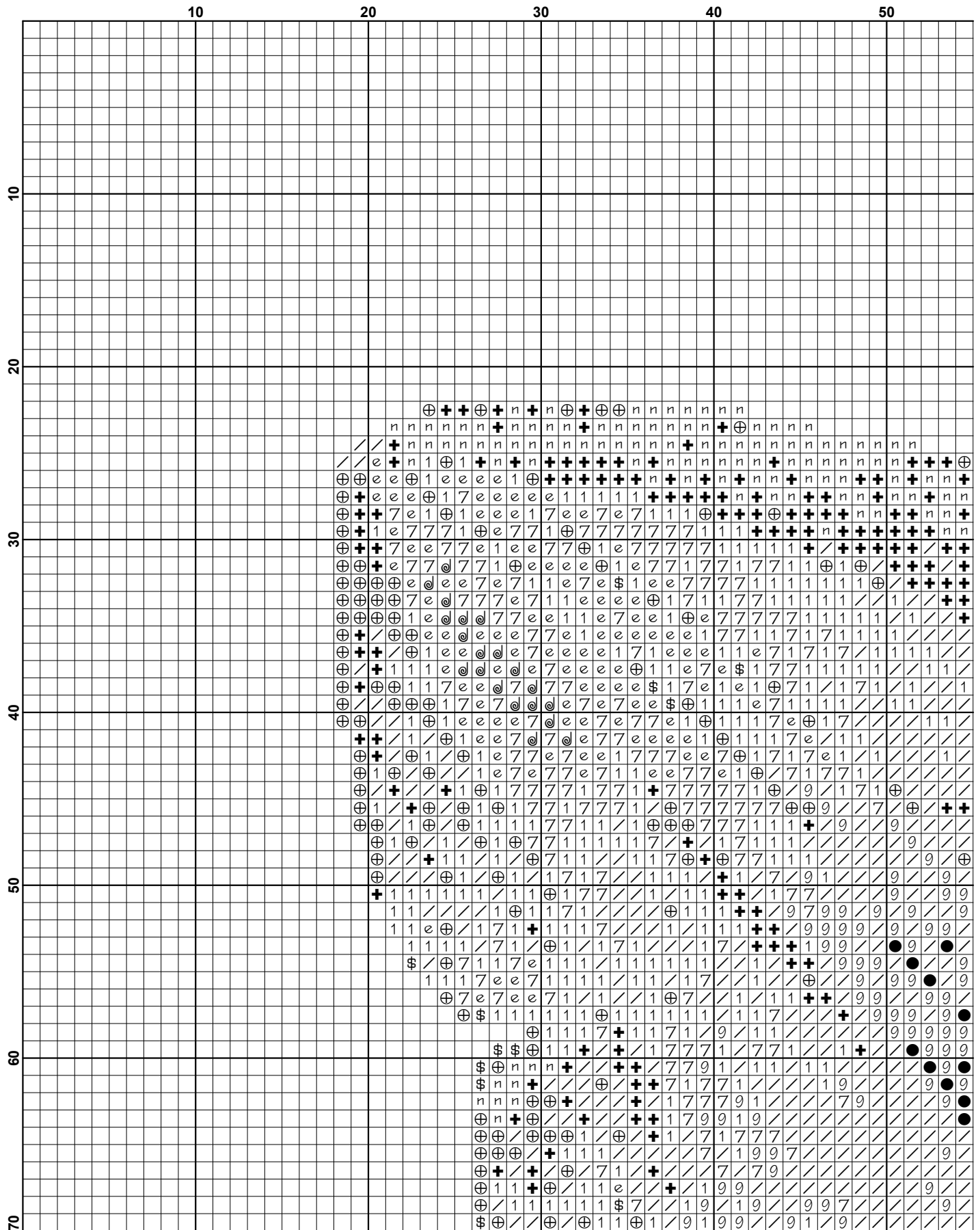
We hope you enjoy stitching our pattern.

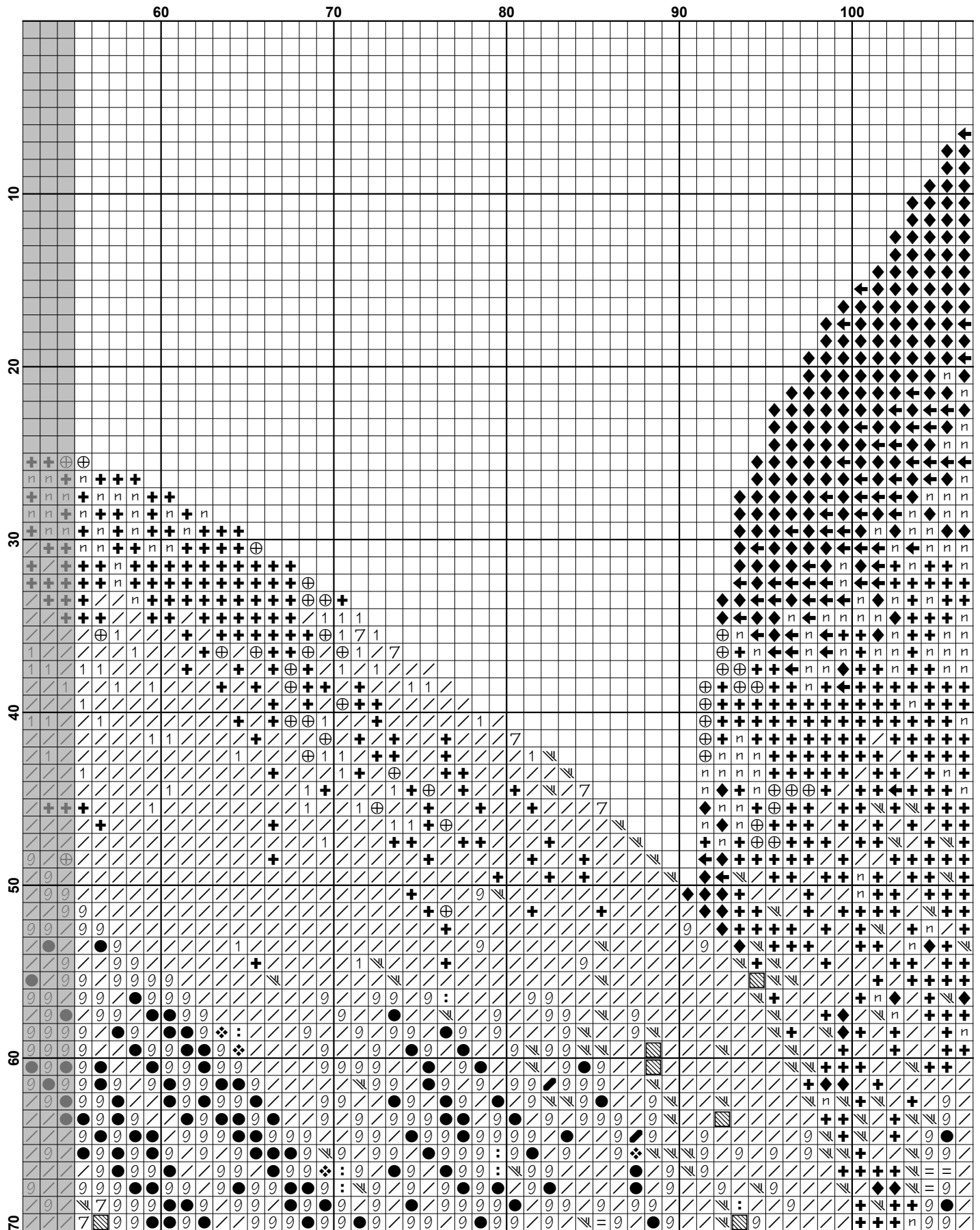
Thanks and Best Wishes  
Tereena Clarke

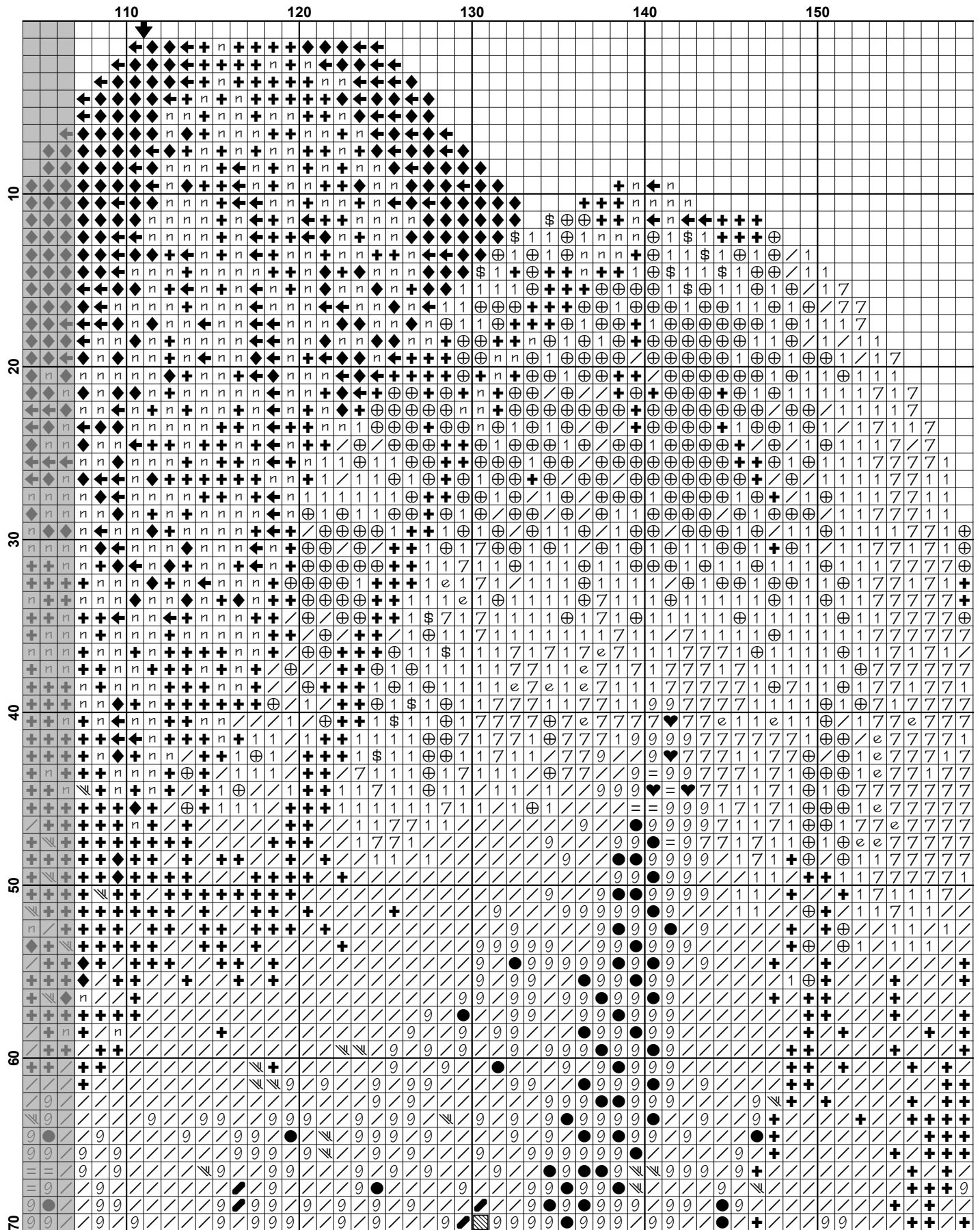
Artecy Cross Stitch  
Po Box 3474  
Tuggerah, NSW 2259  
Australia

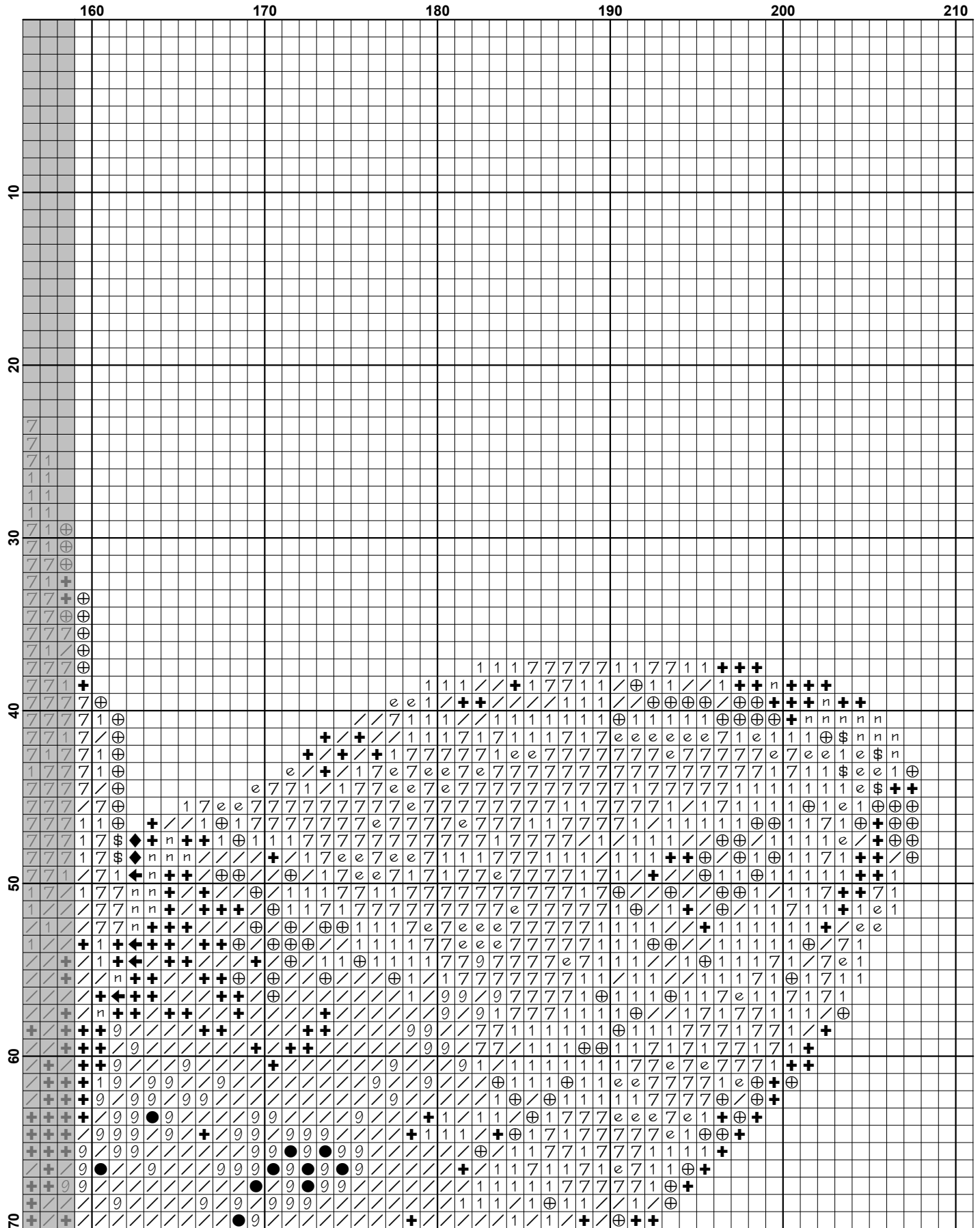
Websites: [www.artecy.com](http://www.artecy.com) and [www.artecyshop.com](http://www.artecyshop.com)  
Email: [artecy@artecy.com](mailto:artecy@artecy.com) or [stitch@artecyshop.com](mailto:stitch@artecyshop.com)

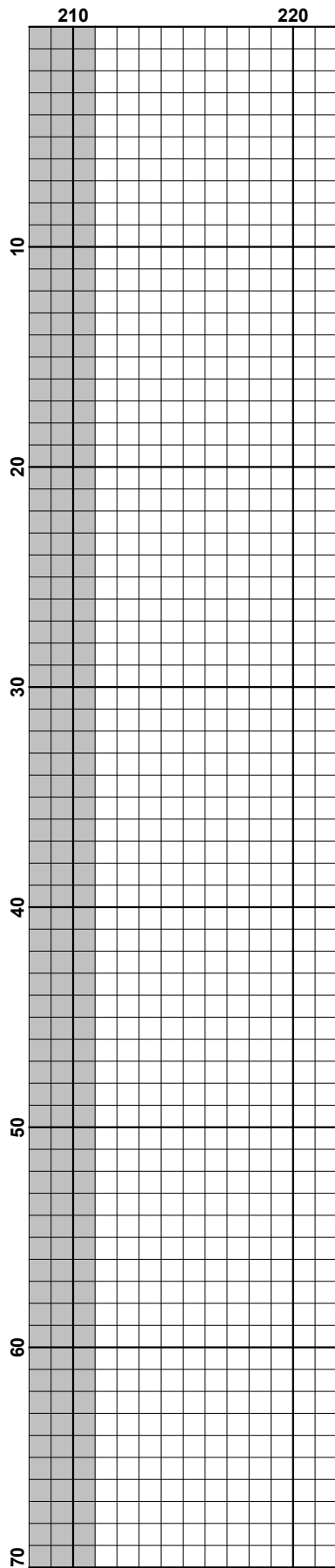
\*Patterns are strictly for personal use only. It is against our copyright to make kits for sale from our designs or to sell, copy or redistribute this pattern in any form. You may not upload our patterns to any internet forums or groups or any other website. You may make 1 copy of this pattern for a working copy for your own personal use if needed.

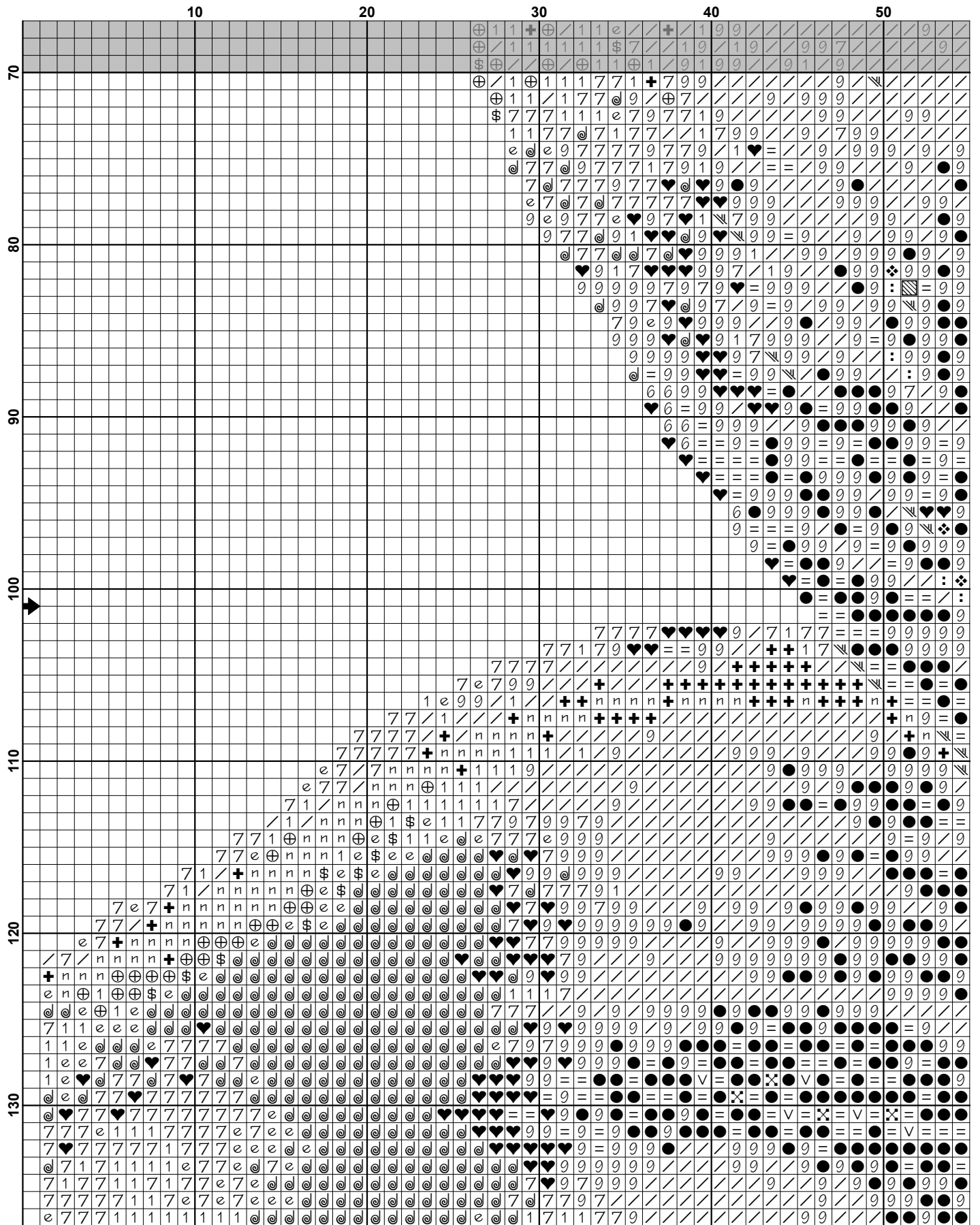




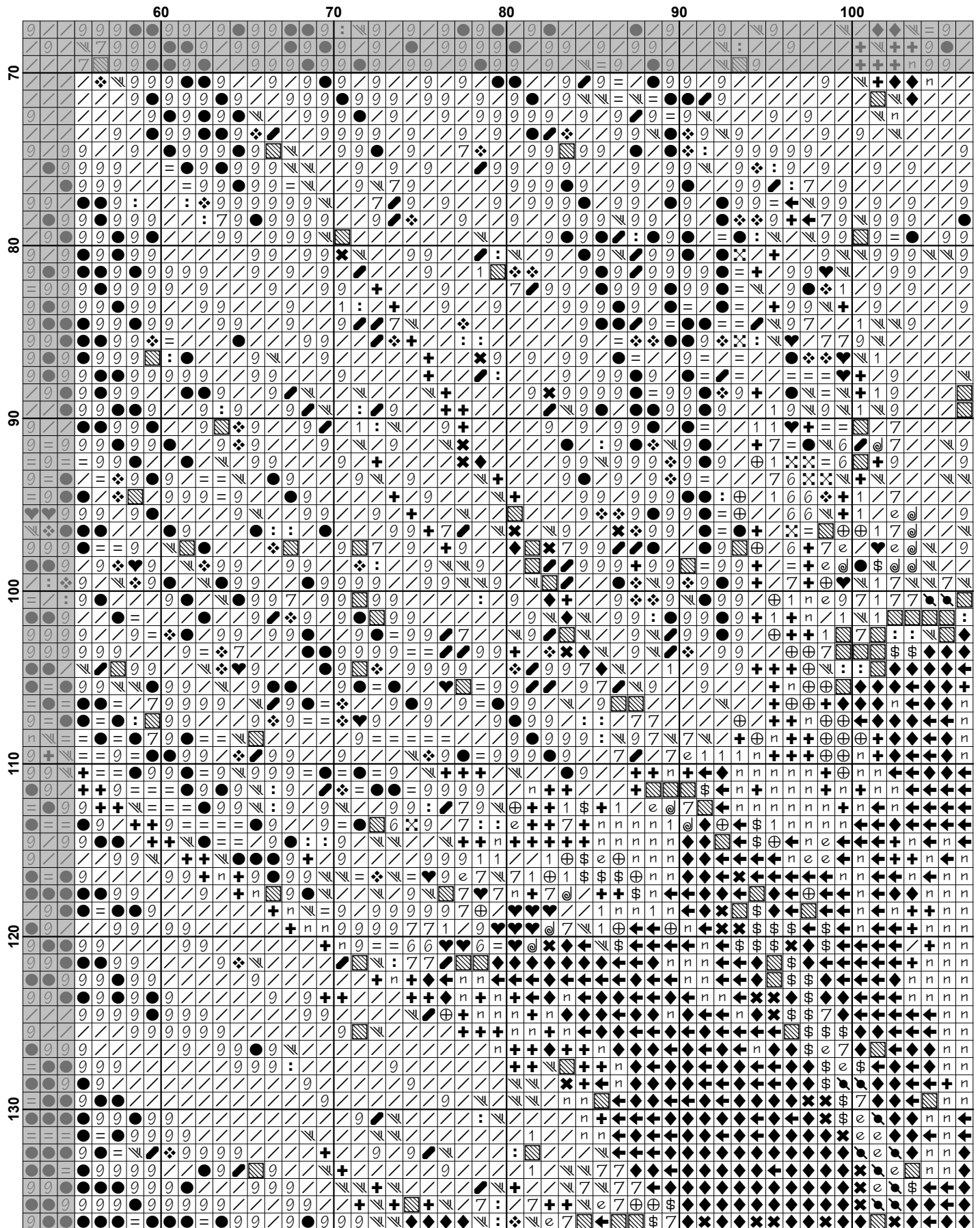


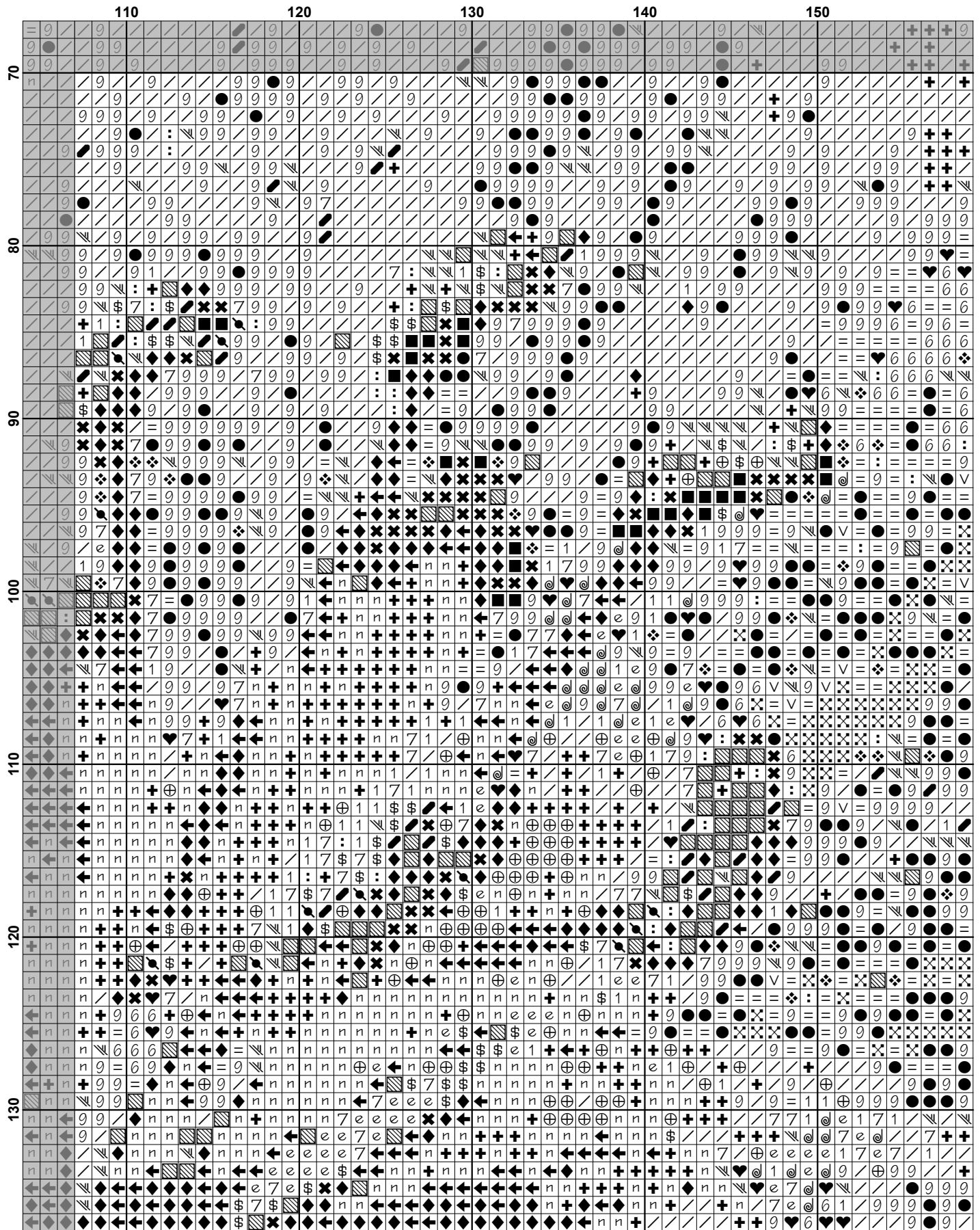








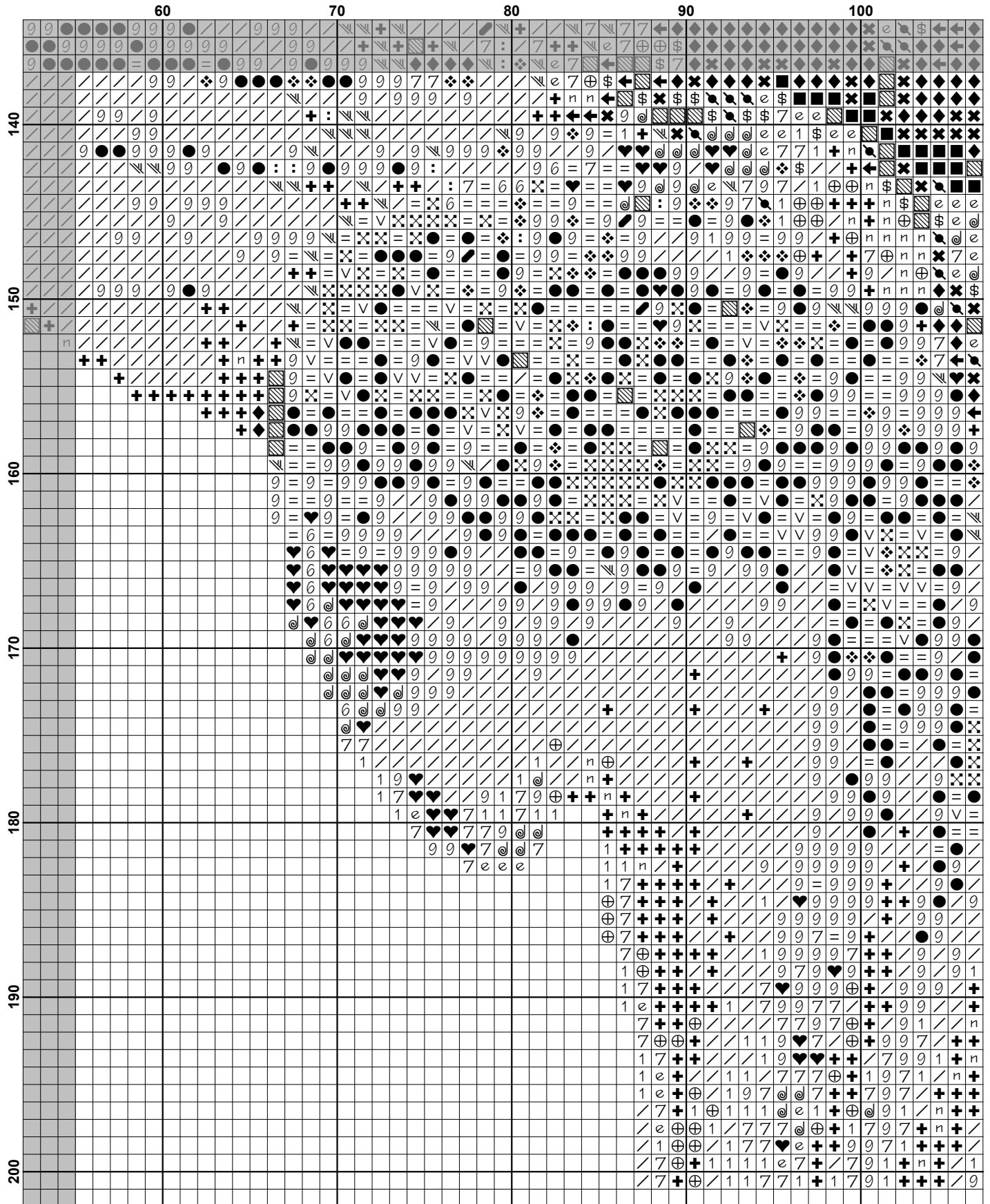


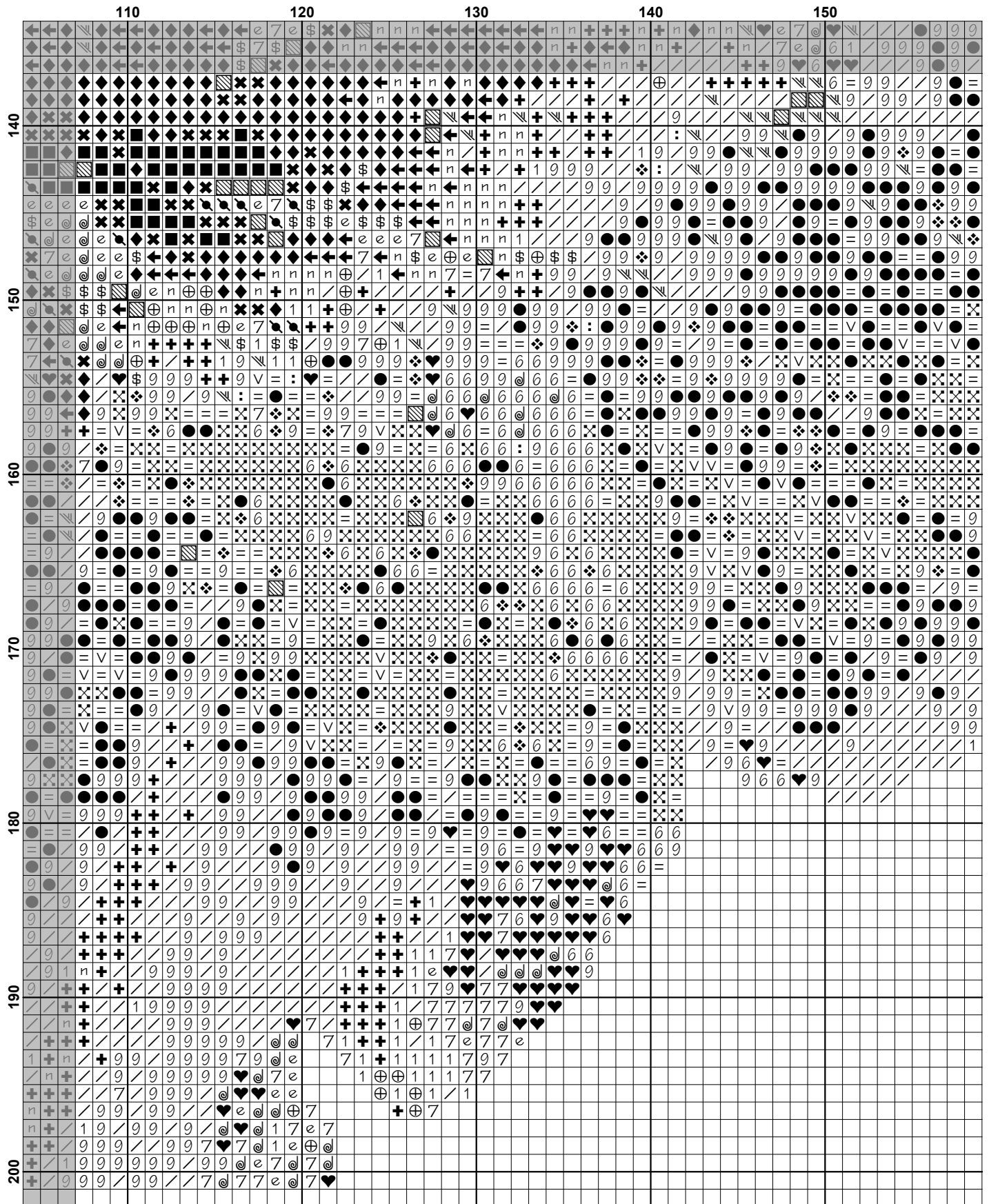


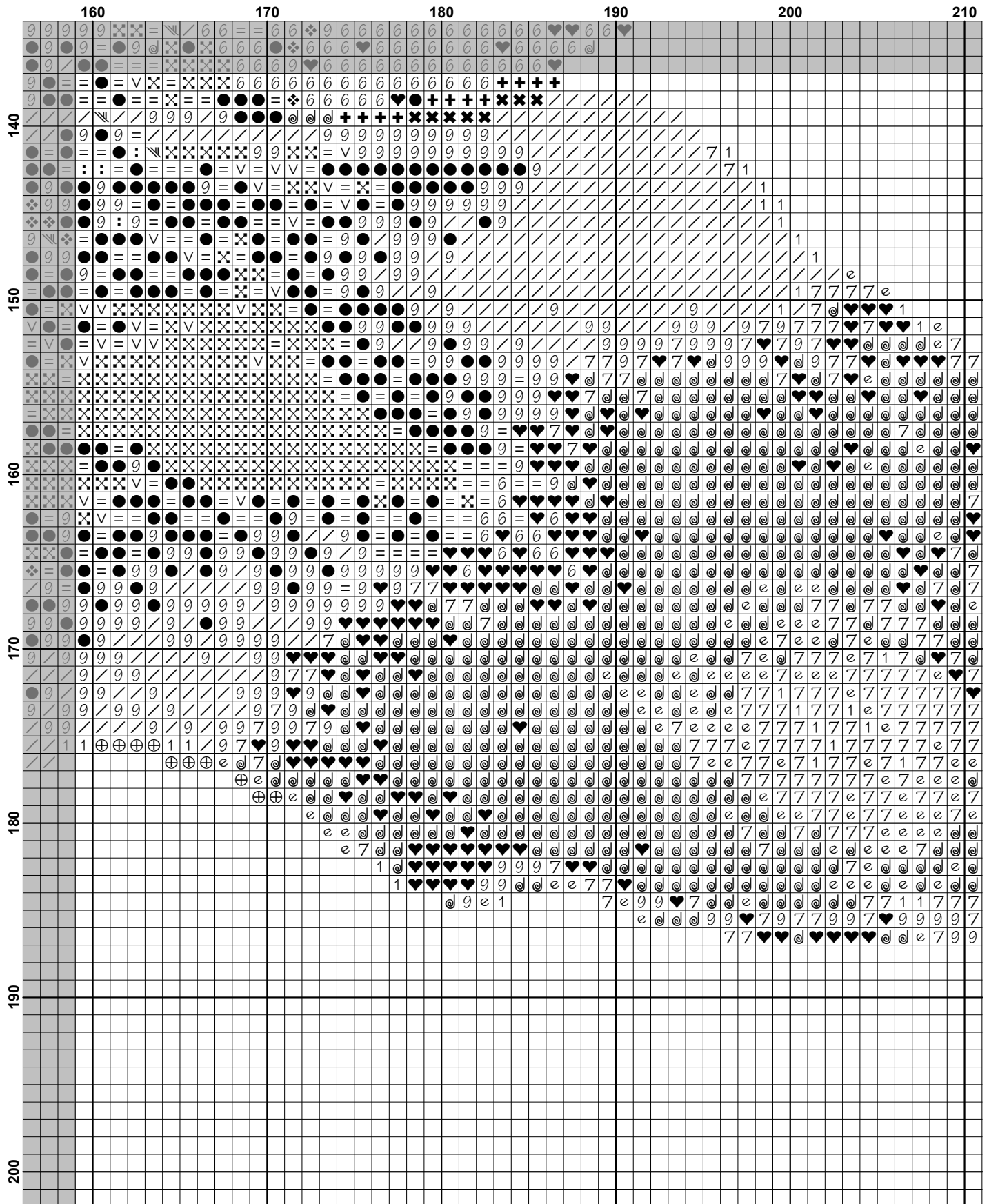




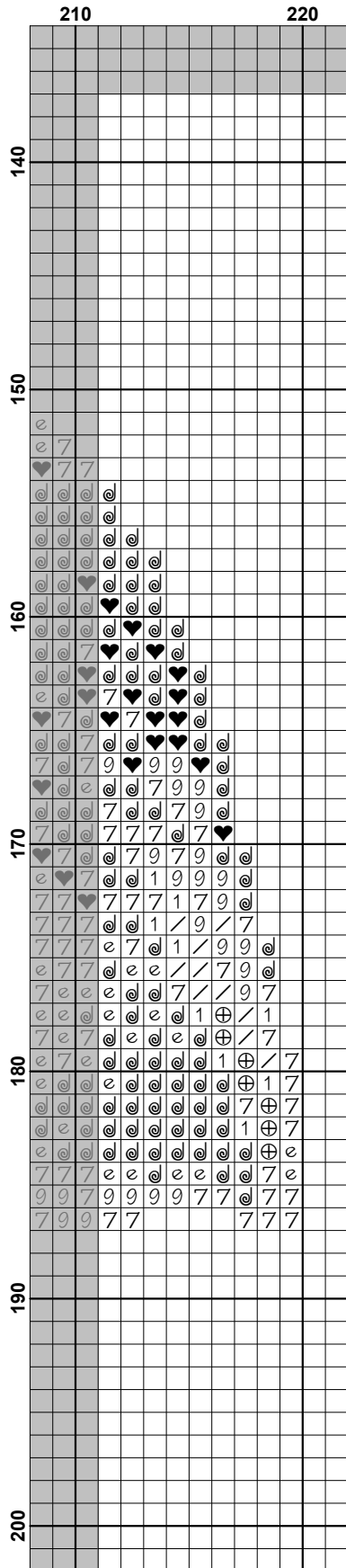












**Pattern Name:** Fire Lily Photo  
**Designed By:** Image by Swallowtail Garden - Flickr  
**Company:** Artecy Cross Stitch  
**Copyright:** Copyright Artecy Cross Stitch. All rights Reserved.  
**Fabric:** Aida 14, Black  
 220w X 200h Stitches  
**Size(s):** 14 Count, 15-5/8w X 14-1/4h in  
 16 Count, 13-3/4w X 12-1/2h in  
 18 Count, 12-1/8w X 11h in

**Floss Used for Full Stitches:**

Symbol	Strands	Type	Number	Color
	2	DMC	307	Lemon
	2	DMC	350	Coral-MD
	2	DMC	498	Christmas Red-DK
	2	DMC	606	Bright Orange-Red
	2	DMC	666	Christmas Red-BRT
	2	DMC	720	Orange Spice-DK
	2	DMC	721	Orange Spice-MD
	2	DMC	722	Orange Spice-LT
	2	DMC	740	Tangerine
	2	DMC	741	Tangerine-MD
	2	DMC	742	Tangerine-LT
	2	DMC	743	Yellow-MD
	2	DMC	817	Coral Red-VY DK
	2	DMC	900	Burnt Orange-DK
	2	DMC	919	Red Copper
	2	DMC	921	Copper
	2	DMC	946	Burnt Orange-MD
	2	DMC	947	Burnt Orange
	2	DMC	970	Pumpkin-LT
	2	DMC	972	Canary-DK
	2	DMC	973	Canary-BRT
	2	DMC	976	Golden Brown-MD
	2	DMC	3328	Salmon-DK
	2	DMC	3340	Apricot-MD
	2	DMC	3371	Black Brown
	2	DMC	3854	Autumn Gold-MD

**Notes:**

The middle of this pattern can be found on page 8 and is 111 stitches across and 101 stitches down.

Pattern layout using page numbers in top left.

1 2 3 4 5  
 6 7 8 9 10  
 11 12 13 14 15

**Usage Summary**

**Strands Per Skein:** 6

**Skein Length:** 313.0 in

Type	Number	Full	Half	Quarter	Petite	Back(in)	Str(in)	Spec(in)	French	Bead	Skein Est.
DMC 307	307	922	0	0	0	0.0	0.0	0.0	0	0	1.000
DMC 350	350	168	0	0	0	0.0	0.0	0.0	0	0	1.000
DMC 498	498	179	0	0	0	0.0	0.0	0.0	0	0	1.000
DMC 606	606	1238	0	0	0	0.0	0.0	0.0	0	0	1.000
DMC 666	666	580	0	0	0	0.0	0.0	0.0	0	0	1.000
DMC 720	720	537	0	0	0	0.0	0.0	0.0	0	0	1.000
DMC 721	721	1815	0	0	0	0.0	0.0	0.0	0	0	1.000
DMC 722	722	1677	0	0	0	0.0	0.0	0.0	0	0	1.000
DMC 740	740	6172	0	0	0	0.0	0.0	0.0	0	0	3.000
DMC 741	741	3927	0	0	0	0.0	0.0	0.0	0	0	2.000
DMC 742	742	1526	0	0	0	0.0	0.0	0.0	0	0	1.000
DMC 743	743	496	0	0	0	0.0	0.0	0.0	0	0	1.000
DMC 817	817	920	0	0	0	0.0	0.0	0.0	0	0	1.000
DMC 900	900	260	0	0	0	0.0	0.0	0.0	0	0	1.000
DMC 919	919	106	0	0	0	0.0	0.0	0.0	0	0	1.000
DMC 921	921	122	0	0	0	0.0	0.0	0.0	0	0	1.000
DMC 946	946	2074	0	0	0	0.0	0.0	0.0	0	0	1.000
DMC 947	947	883	0	0	0	0.0	0.0	0.0	0	0	1.000
DMC 970	970	1671	0	0	0	0.0	0.0	0.0	0	0	1.000
DMC 972	972	1915	0	0	0	0.0	0.0	0.0	0	0	1.000
DMC 973	973	140	0	0	0	0.0	0.0	0.0	0	0	1.000
DMC 976	976	231	0	0	0	0.0	0.0	0.0	0	0	1.000
DMC 3328	3328	43	0	0	0	0.0	0.0	0.0	0	0	1.000
DMC 3340	3340	679	0	0	0	0.0	0.0	0.0	0	0	1.000
DMC 3371	3371	79	0	0	0	0.0	0.0	0.0	0	0	1.000
DMC 3854	3854	769	0	0	0	0.0	0.0	0.0	0	0	1.000